



**NORTHEAST INDIANA  
SOLID WASTE MANAGEMENT DISTRICT**

Serving DeKalb, LaGrange, Noble and Steuben Counties [www.niswmd.org](http://www.niswmd.org)  
2320 W 800 S. P.O. Box 370 Ashley, IN 46705-0370 • (260) 587-3063 • Fax (260) 587-3523



Household Problem Waste Day 11-1-08

# *Annual Report 2008*

This page intentionally left blank.

# *Table of Contents*

Population	4
President's Letter	5
Financial Statement	6
Personnel Chart	7
Board of Directors	8
2008 Staff & Citizens Advisory Committee	9
Rural Recycling Drop-off Narrative	10
Rural Recycling Station Totals	11
Rural Recycling Materials Profile	12
Rural Recycling Monthly Drop-off Recovery	12
Rural Recycling Recovery Comparison	12
Yard Waste Composting Narrative	13
Yard Waste Composting Recovery Data	14-15
Household Problem Waste Collection Event	16
Household Problem Waste Program Data	17
Waste Minimization Program	18
Curbside & County Office Recycling	19
Fiscal Year 2008 Expenditures	20
Expenditure Distribution by Program Category	21
Total Tons as Reported Annually	22

**P  
o  
p  
u  
l  
a  
t  
i  
o  
n**

INCORPORATED CITIES/TOWNS

Albion	2,323
Altona	193
Angola	7,903
Ashley	997
Auburn	12,837
Avilla	2,396
Butler	2,690
Clear Lake	232
Corunna	249
Cromwell	498
Fremont	1,620
Garrett	5,717
Hamilton	1,233
Hudson	568
Kendallville	10,327
LaGrange	2,935
Ligonier	4,497
Orland	322
Rome City	1,657
St. Joe	470
Shipshewana	527
Topeka	1,180
Waterloo	2,180
Wolcottville	947

COUNTIES

DeKalb	41,796
LaGrange	37,032
Noble	47,526
Steuben	33,450

Population data taken from United States Census Bureau at [www.census.gov](http://www.census.gov). These are 2007 population estimates based on the 2000 census.



## NORTHEAST INDIANA SOLID WASTE MANAGEMENT DISTRICT

Serving DeKalb, LaGrange, Noble and Steuben Counties  
2320 W 800 S. P.O. Box 370 Ashley, IN 46705-0370 • (260) 587-3063 • Fax (260) 587-3523

January 22, 2009

Citizens of Northeast Indiana Solid Waste Management District:

Please read carefully through the pages of this 2008 annual report. You will see that our biggest challenge is managing growth of popular programs, finding adequate funding to meet demand, and helping to lead the way to achieve the next level of understanding regarding Integrated Solid Waste Management.

The District continues to manage the disruption and uncertainty associated with new property tax legislation and on-going implementation of new law, impacting local units of government. We continue to maintain a very conservative approach to spending (essential spending only), maximizing services from our third party contractors and continue challenging staff to do more with less. We have stayed well within the FY08 budget in spite of painful decisions consolidating drop-offs, cutting benefits and some contractor services.

The Solid Waste District continued to cut costs by re-bidding and re-configuring the rural recycling drop-off program, re-quoting and re-configuring health insurance benefits, postponing bid and acquisition of grinding equipment and increasing fee revenue by selling more compost products.

The District (in spite of all the above challenges) was able to conduct (and pay for) an extremely successful Tox-away day in Kendallville on Saturday, November 1<sup>st</sup> 2008. District full and part-time staff with the District contractor, serviced 380 vehicles and recovered over 21 tons of toxic material. Like many other local units of government, we continue to find ways to fund the ever-growing demand for local services. Household Hazardous Waste (HHW) and Electronics (E-waste) recycling continues to grow in demand. E-waste remains the fastest growing segment of the solid waste stream. The Yard Waste Composting program continues to develop market demand for finished compost which is a value added product, reflected in increased sales and revenue helping to fund the program.

Please be sure to visit the District's expanded website at [www.niswmd.org](http://www.niswmd.org). Look up needed program information, and/or contact the District directly. The website continues to grow monthly and has become an invaluable tool to better communicate and provide more service, more efficiently. Drop us a line through our website, or call us at 1-800-777-5462 as we always enjoy hearing from the people we serve.

Sincerely,

  
Mark Pankop, President Solid Waste Board  
Noble County Commissioner



## Northeast Indiana Solid Waste Management District

### FINANCIAL STATEMENT

January 1, 2008 through December 31, 2008

Beginning Balance, January 1, 2008				\$ 554,692.45
RECEIPTS:				
Interest on Investments			\$ 5,180.20	
Property Taxes & Certified Shares				
	DeKalb County		\$ 292,198.46	
	LaGrange County		\$ 213,756.77	
	Noble County		\$ 320,653.85	
	Steuben County		\$ 498,310.24	
Refunds, Reimbursements, Misc. Sales			\$ 12,832.41	
Grant			\$ 10,879.00	
Farm Rent			\$ 1,800.00	
User Fees			\$ 54,289.29	
Grinding Fees			\$ 26,100.00	
Total Receipts				<u>1,436,000.22</u>
TOTAL CASH AVAILABLE				<u>\$ 1,990,692.67</u>
DISBURSEMENTS:				
01 Personnel			\$ 412,066.20	
02 Supplies			70,514.85	
03 Services and Other Charges			671,125.45	
04 Capital Layouts			<u>44,724.59</u>	
Total Disbursements				<u>1,198,431.09</u>
Ending Balance, December 31, 2008				<u>\$ 792,261.58</u>
Funds are currently being held at				
Farmers State Bank				
This report is correct to the best of my knowledge.				
Randy P. Tilbury, CPA, Controller				

# Northeast Indiana Solid Waste Management District Personnel Chart 2008

Citizens Advisory Committee		District Board of Directors
	Steve Christman, QEP Executive Director	
Pam DeCamp Program Coordinator	Jenni Franz Program Specialist	Rich Caston Mechanic/Supervisor
Linda Zirkle Administrative Assistant	Part-Time Seasonal Staff	Joe Baysinger Senior Operator

# NISWMD 2008 Board of Directors

## Executive Committee

Mark Pankop	President
Ron Smith	First Vice President
Phil Curtis	Second Vice President
Mayor Richard Hickman	Secretary
Don VanWye	Treasurer

## District Board of Directors

Don Kaufman	County Commissioner, DeKalb
Don VanWye	County Councilman, DeKalb
David Wiant	Mayor, City of Garrett
Norm Yoder	Mayor, City of Auburn
Fred Brown	County Councilman, LaGrange
Phil Curtis	County Commissioner, LaGrange
Yvonne Eash	President, Topeka Town Council
Terry Helmer	President, LaGrange Town Council
Patty Fisel	Mayor, City of Ligonier
Suzanne Handshoe	Mayor, City of Kendallville
Don Moore	County Councilman, Noble
Mark Pankop	County Commissioner, Noble
Dick Hickman	Mayor, City of Angola
Loretta Smart	President, Fremont Town Council
Ron Smith	County Commissioner, Steuben
Sara Tubergen	County Councilwoman, Steuben

## Northeast Indiana Solid Waste Management District 2008 Staffing/Citizen Advisory Committee

### Full-Time Staff

Steve Christman, QEP	Executive Director
Pam DeCamp	Program Coordinator
Rich Caston	Mechanic/Supervisor
Joe Baysinger	Senior Operator
Jenni Franz	Program Specialist
Linda Zirkle	Administrative Assistant

### Part-Time & Seasonal Staff

Dick Bond	DeKalb Compost Lot
Chris Boswell	Trine University Intern
Richard Freed	DeKalb Compost Lot
Gene Hamm	Field Staff
Richard Heller	DeKalb Compost Lot
Howard Johnson	Steuben Compost Lot
Larry Snyder	Steuben Compost Lot
Bill Stackhouse	Steuben Compost Lot
Wayne Truelove	Field Staff

### Citizens Advisory Committee

Chad Arnold	Industry Representative
Colleen Hake Boyd	Citizen Representative
Scott Martin	Industry Representative
Clark Reed	Citizen Representative
Max Robison	Citizen Representative

# Rural Recycling Drop-off Program

2008 was a year of change for the rural recycling drop-off program. A new contract was implemented and with that contract came new recycling locations.

Stations that were in Ashley, Cromwell, Howe, Prairie Heights, St. Joe and Rome City were relocated to create a more cost effective system. This new system boasts centralized stations in Albion, Angola, Ashley, Auburn, Avilla, Butler, Fremont, Hamilton, Kendallville, LaGrange, Ligonier, Orland, Shippshewana, Topeka and Wolcottville.



Residents recycling in Auburn

In addition to a more cost effective drop-off system, the contract with [Borden Waste-Away](#) includes provisions for the District to receive a monthly fiber reimbursement. This is the first time the District has received subsidies from the materials collected for recycling through a contractor.

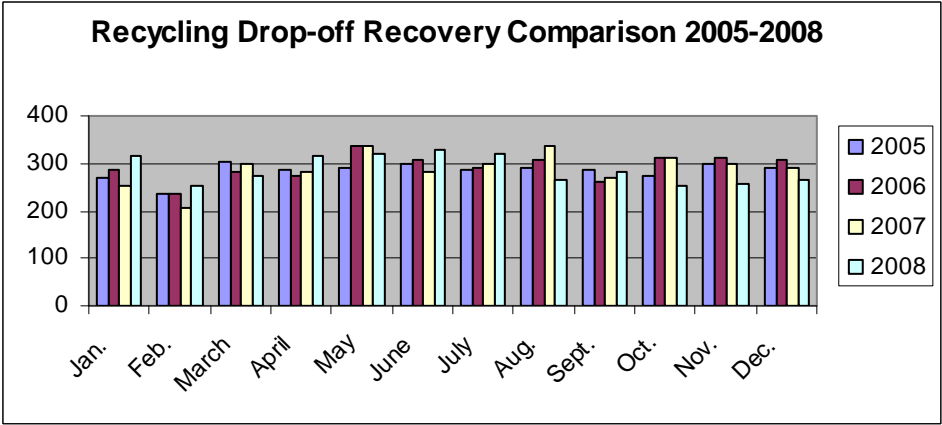
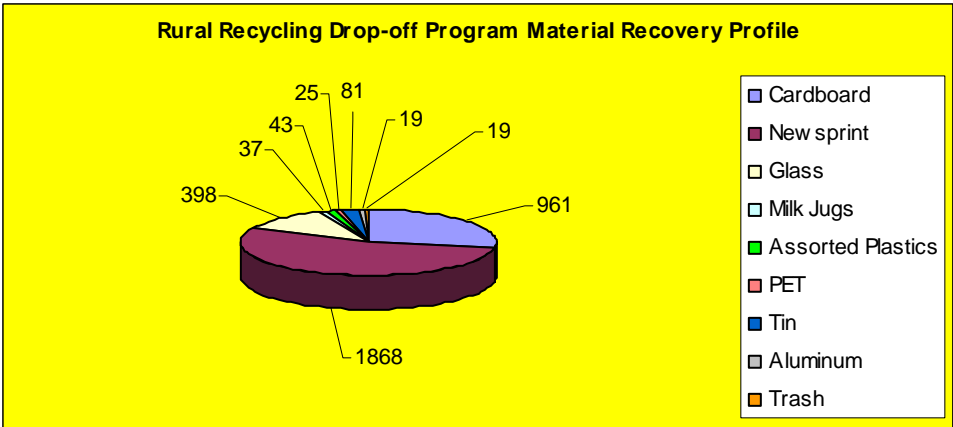
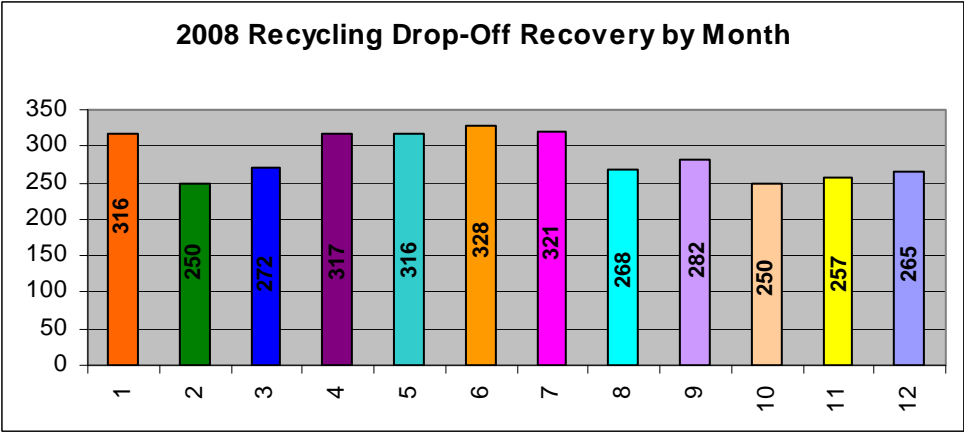


New Recycling Station in Ligonier

# Recycling Drop-off Monthly Recovery (Tons)

Station	Jan.	Feb.	March	April	May	June	July	Aug.	Sept.	Oct.	Nov.	Dec.	Total
ALBION	18	13	14	16	15	19	16	16	14	16	14	16	187
ANGOLA	41	31	34	44	40	41	46	40	44	38	37	38	474
ASHLEY	7	7	7	11	7	8	0	0	0	0	0	0	47
AUBURN	46	34	41	43	42	50	55	45	41	39	44	43	523
AVILLA	19	15	17	16	17	17	16	14	15	12	15	17	190
BUTLER	11	9	9	11	10	10	13	8	12	9	11	12	125
CROMWELL	9	7	7	9	6	5	6	0	0	0	0	0	49
FREMONT	8	9	7	10	9	10	12	9	12	9	9	10	114
HAMILTON	8	5	6	8	6	8	8	5	6	6	5	6	77
HOWE	12	11	12	14	13	13	11	0	0	0	0	0	86
KENDALLVILLE	40	30	37	36	39	43	33	39	41	33	35	35	441
LAGRANGE	21	17	17	23	19	19	18	19	22	19	20	21	235
LIGONIER	5	5	5	8	10	14	16	15	16	16	15	16	141
ORLAND	7	6	6	6	7	9	9	8	10	8	7	8	91
PRAIRIE HEIGHTS	8	6	7	7	8	7	6	0	0	0	0	0	49
ROME CITY	9	6	7	7	8	7	8	0	0	0	0	0	52
NISWMD OFFICE	6	4	3	6	5	5	9	8	10	9	9	10	84
SHIPSEWANA	8	7	8	11	22	7	9	8	8	8	9	8	113
TOPEKA	11	10	10	11	11	11	13	10	12	11	11	10	131
ST. JOE	8	6	6	8	6	7	0	0	0	0	0	0	41
WOLCOTVILLE	14	12	12	12	16	18	17	24	19	17	16	15	192
<b>TOTALS</b>	<b>316</b>	<b>250</b>	<b>272</b>	<b>317</b>	<b>316</b>	<b>328</b>	<b>321</b>	<b>268</b>	<b>282</b>	<b>250</b>	<b>257</b>	<b>265</b>	<b>3442</b>

\*All figures rounded to the nearest whole number



Figures could differ between charts due to software rounding.

# Yard Waste Composting



NISWMD has maintained a yard waste composting program for over a decade.

This program has grown and expanded in many areas while striving to remain a

convenient option for disposal of grass, leaves and brush.



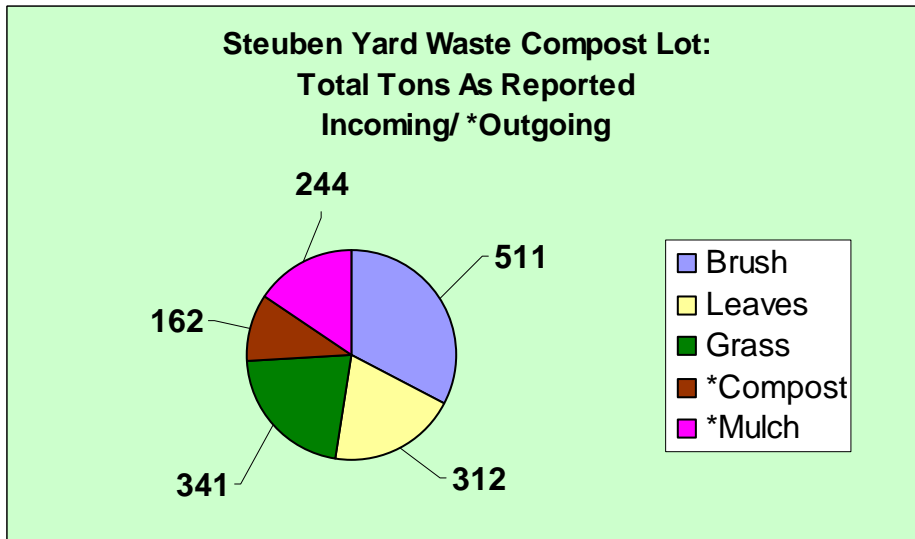
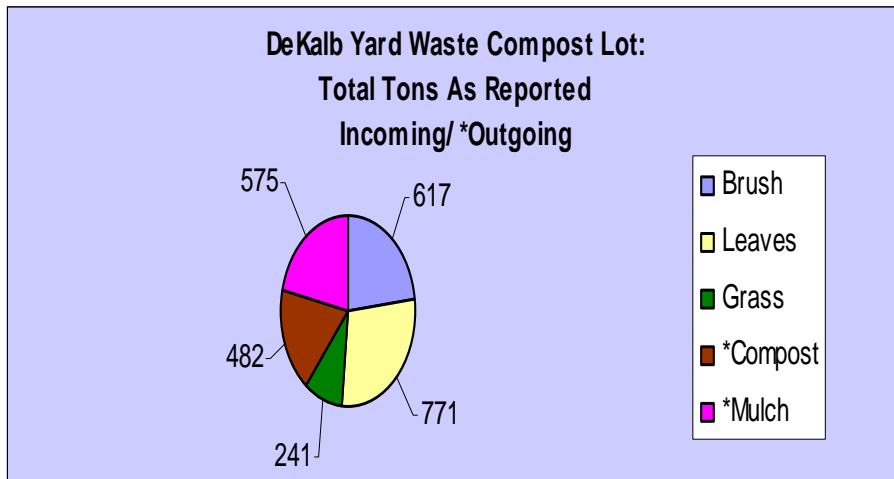
District staff have worked diligently to control the decomposition of leaves and grass. Doing this allows a rich, sought after compost product to be created! In 2008 alone the District sold 2,254 cubic yards of compost. That's an approximate increase of 113 percent!



This has been the first year for marketing a wood mulch product. District field staff have strived to create a clean product that can be used for a variety of applications. NISWMD is very excited to further develop this new venture!



# Yard Waste Composting Results



# Yard Waste Composting Results

## LaGrange County Recovery Data:

Compost: 424 tons

Mulch: 2,083 tons

## Noble County Recovery Data:

Compost: 614 tons

Mulch: 1,833 tons

## District Office Recovery Data:

Compost: 152 tons

PLEASE NOTE: The LaGrange and Noble County yard waste compost lots are un-manned drop-off configurations. The data reported to NISWMD came from District field staff as they complete routine grinding, windrow turning and lot maintenance activities as well as in-house transportation records. Compost materials were processed and made available for purchase at the DeKalb and Steuben Compost Lots.

## TOTAL MATERIAL HANDLED IN 2008:

**9,362 Tons**

# Household Problem Waste Collection Event



- Event held on November 1st from 9:00 AM to 2:00 PM
- Publicity funded through IDEM PEP grant and roll-off sponsored by Kendallville Iron & Metal
- Top 5 publicity methods:
  - Newspaper - 72%
  - Billboard - 7%
  - Radio - 6%
  - Flyers - 6%
  - Word-of-mouth - 3%
- 380 vehicles participated
- \$1,912.00 collected (\$5.00 fee assessed for each vehicle)
- Top 5 participating cities/towns:
  - Kendallville - 172 vehicles
  - Albion - 38 vehicles
  - Rome City - 29 vehicles
  - Wolcottville - 28 vehicles
  - LaGrange - 20 vehicles
- 11 District staff members, 2 contracted chemists, 2 contracted lab pack technicians and volunteers from the Kendallville Legion handled materials and assisted customers
- 42,568 pounds of material recycled
  - 35,262 pounds of paint related material collected
  - 7,306 pounds of household problem waste collected

# Household Problem Waste Program

The Household Problem Waste Program is held on Friday mornings mid-April through mid-November. Program hours are 8:00 a.m. to 12:00 p.m. Residents within the District can bring an assortment of items to be properly handled and recovered for a minimal fee.

<b>MATERIALS</b>	<b>TONS RECOVERED</b>
Aerosols	1.73
Antifreeze	.67
Batteries (dry cell)	15.30
Batteries (lead acid)	2.83
Flammable Liquids/Solids	3.88
Fluorescent Bulbs	2.74
Mercury Related	.01
Oil	10.24
Paint Related - Latex	24.57
Paint Related - Oil Based	20.82
Pesticides	4.36
Propane Cylinders	.77
Miscellaneous*	1.08
<b>Grand Total</b>	<b>89</b>

<b>PROGRAM</b>	<b>TONS RECOVERED</b>
Books	29
Electronics	42
Shoes	5
<b>Grand Total</b>	<b>76</b>

\*Miscellaneous Material includes (but is not limited to) acids, caustics, & oxidizers

# Waste Minimization Program

What exactly is the Waste Minimization Program? Simply put, it is a program where District staff provides guidance for developing environmentally friendly procedures within the workplace. Basically, we try to divert any and all waste from the landfill.

The District Program Coordinator makes a visit to your office. After a brief meeting she accompanies you on a tour of your facility to evaluate your current procedures. Suggestions are then offered on alternative methods or materials. The Program Coordinator will also assist with the identification of material vendors or processors. Following the meeting, all suggestions are provided to you in a written report that lists her findings.

Why would you want to do this? Well, diverting materials destined for the landfill has many benefits. Keeping reusable or recyclable materials out of your waste stream generally saves you a portion of your solid waste disposal fee. If you remove or reduce what you throw away, you also reduce the need to empty the solid waste container as often. You therefore save money! Materials such as cardboard, office paper and various plastics are items that historically are easy to find alternative homes for. Ask about this service. The Waste Minimization Program could be a win-win for everyone.

**181 businesses took part in waste minimization efforts in 2008!**

# Curbside Recycling Programs

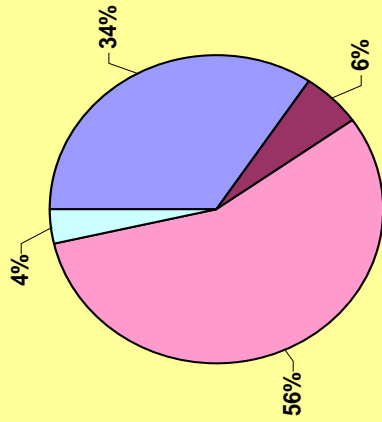
City/Town	Service Provider	Program Type	Tons Recovered
Angola	Republic Services	Curbside	371
Auburn	Republic Services	Curbside	428
Clear Lake	Republic Services	Curbside	6
Fremont	Allied Waste Services	Curbside	56
Garrett	City Operated	Manned Drop-off	70
*Hamilton/Lake James	Allied Waste Services	Curbside	75
Waterloo	Republic Services	Curbside	80
Avilla/Kendallville/Albion	Noble County Disposal	Curbside (Subscription only)	261
<b>TOTAL TONS RECYCLED</b>			<b>1,341</b>

# Office Paper Recycling Programs

DeKalb County Courthouse	18
LaGrange County Courthouse	5
Noble County Courthouse	13
Steuben County Courthouse	15
NISWMD	14
<b>TOTAL TONS RECYCLED</b>	<b>65</b>

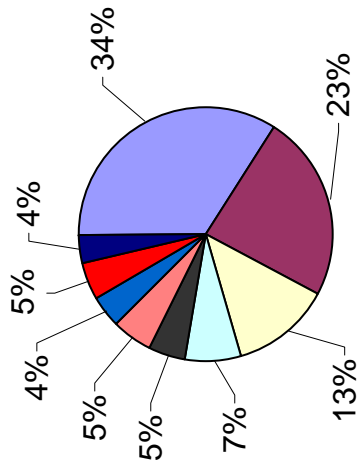
\*Allied Waste combines Hamilton and Lake James tonnage.

# FY 2008 Budget Expenditure Distribution

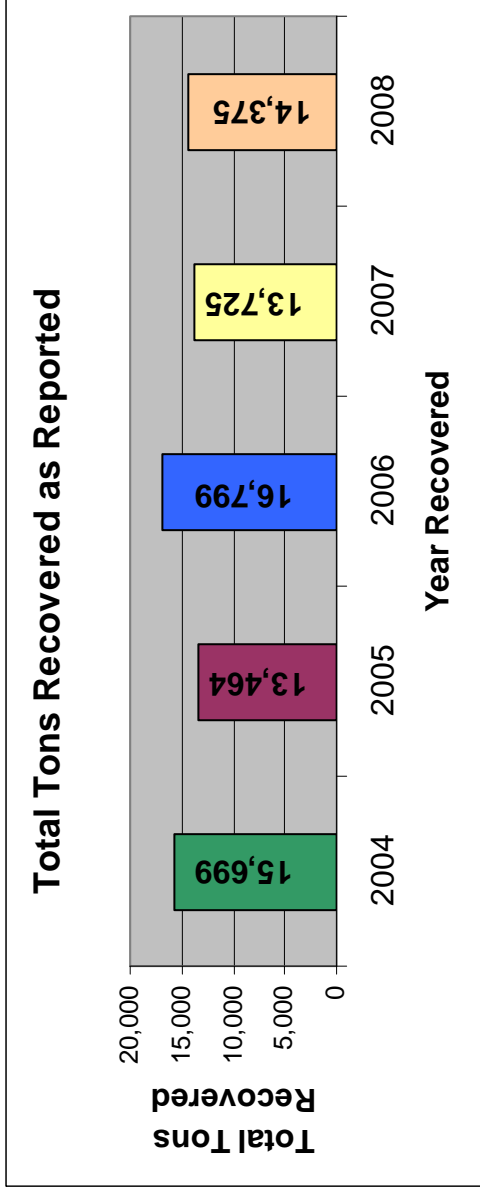


Personnel-01	\$412,066.20
Supplies-02	\$70,514.85
Services/Other Charges-03	\$671,125.45
Capital-04	\$44,724.59

### Expenditure Distribution by Program Category 2008



- Recycling Services - \$432,548.15
- Composting Services - \$293,696.25
- Household Hazardous Waste - \$160,016.75
- Education and Public Info - \$91,099.35
- E-Waste Services - \$60,618.35
- Pollution Prevention & Waste Minimization - \$66,115.65
- Solid Waste Planning (Admin) - \$53,648.85
- Solid Waste Facilities - \$58,235.25
- Leg./Gov. Relations - \$47,157.90



Note: Based on tons recovered as reported to the Solid Waste District (excluding business and industry) and based on the projected solid waste generation rate of 200,000 tons per year. Waste generation rate (200,000 tons per year) is obtained from the Indiana Department of Environmental Management 2006 Facility Data Report (figure was rounded). Utilizing this information, the estimated waste reduction rate is 7%.

This page intentionally left blank.

# **Northeast Indiana Solid Waste Management District**



**2320 West 800 South  
P.O. Box 370  
Ashley, Indiana 46705  
800-777-5462**

**Visit us on the web at [www.niswmd.org](http://www.niswmd.org)**