



District News

Northeast Indiana
Solid Waste
Management District

Volume 1 Issue 3

April 2008

Monthly electronic newsletter provided to the people we serve

Household Hazardous Waste Program Begins

Important Dates:

- * April 8th Board of Directors' meeting 6:30 pm at the District Office in Ashley
- * Compost lots open Monday, April 14th at 8 am
- * Friday morning Household Hazardous Waste program begins April 18th **8:00am - Noon**
- * May 13th Board of Directors' meeting 6:30 pm at the District Office in Ashley

Public Welcome

Mission

Statement

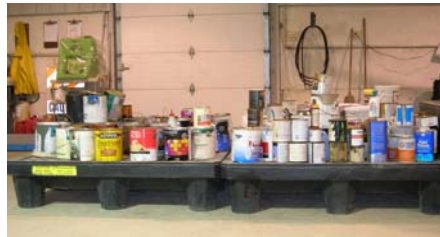
To assure uniform, efficient, cost-effective solid waste services are available to the citizens of the District.

Friday, April 18th marks the beginning of the household hazardous waste program for the 2008 season. **On Friday mornings only from 8:00 am until noon**, materials such as used paint, oil, pest and pool chemicals, cleaners, propane tanks, TV's and all electronics will

be accepted. **Fees Apply** Now is the time to clean out the barn, garage or basement and bring all your household hazardous waste items to the District. Be on the safe side when transporting

your waste. Do not mix materials together. Containers should be tightly closed, labeled and not leaking. 62 tons of household hazardous waste was recycled through the District's program in 2007. Material accepted on: Friday mornings.

No exceptions!



Ligonier Recycling Station to be Relocated

To provide a better recycling program the red, yellow and blue recycling containers in Ligonier will be relocated to the Ligtel Building on US 6 just west of the stoplight at State Road 5. Residents will see an increased number of containers at this location to accommodate residents in the surrounding area. Watch for the upcoming changes to this program. **Encourage your residents to recycle correctly.**

Curbside Recycling Programs Recover Tons

Residents in Angola, Auburn, Clear Lake, Fremont, Garrett, Hamilton and Waterloo enjoy the convenience of recycling at their curbside. 1,289 tons of recyclables

were recovered during 2007. Think about what curbside recycling could do for your town. By collecting at the point of generation, your residents will reduce trips to

the local recycling station, save fuel and control litter. Let the District help. Contact us for information.



Northeast Indiana Solid Waste Management

Primary Business Address
2320 W—800 S
P.O. Box 370
Ashley, IN 46705

Phone: 800-777-5462
Fax: 260-587-3523
E-mail: info@niswmd.org or
pdecamp@niswmd.org

Reduce-Reuse-Recycle-Rethink

For more
information go to
the District's website
at www.niswmd.org

Facts About the NISWMD In 2007

- ⇒ 8,787 tons of yard waste was handled
- ⇒ 3,458 tons were recycled at the red, yellow and blue recycling stations—of which 2,888 tons was cardboard and newspaper
- ⇒ 50 tons of electronics, 25 tons of books and 4 tons of used shoes were recycled
- ⇒ 62 tons of household hazardous waste recovered—of which 28 tons was paint related
- ⇒ Assisted 157 companies with the reduction of solid waste and toxins

Compost Lots Open for 2008 Season

Hours of Operation: DeKalb & Steuben

Mon—Fri 8:00 am—7:00 pm

Sat 8:00 am—3:00 pm

Beginning Monday, April 14th, the DeKalb and Steuben County Compost lots will be open to receive yard waste. Residents throughout the area will have the opportunity to recycle leaves, branches and grass clipping during the scheduled working hours. All contractors, landscapers and lawn service providers need to register to utilize this service. Contact the District for registration forms.

Mulch is available at most compost lots. Free of charge.

Don't Forget: Screened compost is available with free loading, at the District office in Ashley for \$5 a cubic yard. A full sized pick-up will hold 3 cubic yards. Plan now to “feed” your lawn and garden with this rich black organic material.

Visit our Website

120,000 residents visited the District's website in 2007. Why not take a moment to check it out yourself! The website is a great place to discover up-to-date information plus, learn about our programs and services.

Go to www.niswmd.org and see what you can find!

Did you know:

Yard waste represents
14% of the total
residential
waste stream